

HYUNDAI SPECIAL STEEL

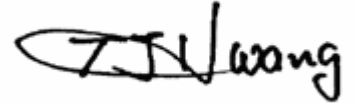
151 Daesong-ro, Nam-gu
Pohang-si, Gyeongbuk
Korea



The following sample(s) was/were submitted and identified by/on behalf of the client as:-

SGS File No. : AYGU19-00120
Product Name : 10B21
Item No./Part No. : N/A
Received Date : 2019. 01. 02
Test Period : 2019. 01. 02 to 2019. 01. 10
Test Results : For further details, please refer to following page(s)

SGS Korea Co., Ltd.
/ LTS Busan Laboratory



Thomas Hwang / Lab Manager

This document is issued by the Company subject to its General Conditions of Service printed overleaf, available on request or accessible at <http://www.sgs.com/en/Terms-and-Conditions.aspx> and, for electronic format documents, subject to Terms and Conditions for Electronic Documents at www.sgs.com/terms_e-document.htm http://www.sgs.com/terms_e-document.htm. Attention is drawn to the limitation of liability, indemnification and jurisdiction issues defined therein. Any holder of this document is advised that information contained herein reflects the Company's findings at the time of its intervention only and within the limits of Client's instructions, if any. The Company's sole responsibility is to its Client and this document does not exonerate parties to a transaction from exercising all their rights and obligations under the transaction documents. This document cannot be reproduced except in full, without prior written approval of the Company. Any unauthorized alteration, forgery or falsification of the content or appearance of this document is unlawful and offenders may be prosecuted to the fullest extent of the law. Unless otherwise stated the results shown in this test report refer only to the sample(s).



Test Report No. F690101/LF-CTSAYGU19-00120

Issued Date : 2019. 01. 10

Page 2 of 4

Sample No. : AYGU19-00120.001
Sample Description : 10B21
Item No./Part No. : N/A
Materials : N/A

Heavy Metals

| Test Items | Unit | Test Method | MDL | Results |
|-----------------------------|-------|--|-----|---------|
| Cadmium (Cd) | mg/kg | With reference to EPA 3052(1996), US EPA 6010B(1996), ICP | 0.5 | N.D. |
| Lead (Pb) | mg/kg | With reference to EPA 3052(1996), US EPA 6010B(1996), ICP | 5 | N.D. |
| Mercury (Hg) | mg/kg | With reference to EPA 3052(1996), US EPA 6010B(1996), ICP | 2 | N.D. |
| Hexavalent Chromium (Cr VI) | mg/kg | With reference to US EPA 3060A(1996), US EPA 7196A(1992), UV | 1 | N.D. |

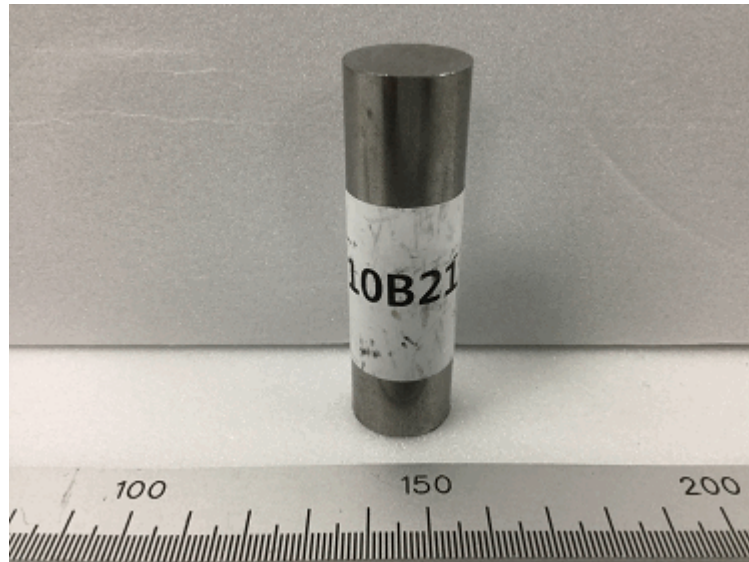
Flame Retardants-PBBs/PBDEs

| Test Items | Unit | Test Method | MDL | Results |
|--------------------------|-------|---------------------|-----|---------|
| Monobromobiphenyl | mg/kg | US EPA 3540C, GC/MS | 5 | N.D. |
| Dibromobiphenyl | mg/kg | US EPA 3540C, GC/MS | 5 | N.D. |
| Tribromobiphenyl | mg/kg | US EPA 3540C, GC/MS | 5 | N.D. |
| Tetrabromobiphenyl | mg/kg | US EPA 3540C, GC/MS | 5 | N.D. |
| Pentabromobiphenyl | mg/kg | US EPA 3540C, GC/MS | 5 | N.D. |
| Hexabromobiphenyl | mg/kg | US EPA 3540C, GC/MS | 5 | N.D. |
| Heptabromobiphenyl | mg/kg | US EPA 3540C, GC/MS | 5 | N.D. |
| Octabromobiphenyl | mg/kg | US EPA 3540C, GC/MS | 5 | N.D. |
| Nonabromobiphenyl | mg/kg | US EPA 3540C, GC/MS | 5 | N.D. |
| Decabromobiphenyl | mg/kg | US EPA 3540C, GC/MS | 5 | N.D. |
| Monobromodiphenyl ether | mg/kg | US EPA 3540C, GC/MS | 5 | N.D. |
| Dibromodiphenyl ether | mg/kg | US EPA 3540C, GC/MS | 5 | N.D. |
| Tribromodiphenyl ether | mg/kg | US EPA 3540C, GC/MS | 5 | N.D. |
| Tetrabromodiphenyl ether | mg/kg | US EPA 3540C, GC/MS | 5 | N.D. |
| Pentabromodiphenyl ether | mg/kg | US EPA 3540C, GC/MS | 5 | N.D. |
| Hexabromodiphenyl ether | mg/kg | US EPA 3540C, GC/MS | 5 | N.D. |
| Heptabromodiphenyl ether | mg/kg | US EPA 3540C, GC/MS | 5 | N.D. |
| Octabromodiphenyl ether | mg/kg | US EPA 3540C, GC/MS | 5 | N.D. |
| Nonabromodiphenyl ether | mg/kg | US EPA 3540C, GC/MS | 5 | N.D. |
| Decabromodiphenyl ether | mg/kg | US EPA 3540C, GC/MS | 5 | N.D. |

This document is issued by the Company subject to its General Conditions of Service printed overleaf, available on request or accessible at <http://www.sgs.com/en/Terms-and-Conditions.aspx> and, for electronic format documents, subject to Terms and Conditions for Electronic Documents at www.sgs.com/terms_e-document.htm http://www.sgs.com/terms_e-document.htm. Attention is drawn to the limitation of liability, indemnification and jurisdiction issues defined therein. Any holder of this document is advised that information contained herein reflects the Company's findings at the time of its intervention only and within the limits of Client's instructions, if any. The Company's sole responsibility is to its Client and this document does not exonerate parties to a transaction from exercising all their rights and obligations under the transaction documents. This document cannot be reproduced except in full, without prior written approval of the Company. Any unauthorized alteration, forgery or falsification of the content or appearance of this document is unlawful and offenders may be prosecuted to the fullest extent of the law. Unless otherwise stated the results shown in this test report refer only to the sample(s).

- NOTE: (1) N.D. = Not detected.(<MDL)
 (2) mg/kg = ppm
 (3) MDL = Method Detection Limit
 (4) - = No regulation
 (5) ** = Qualitative analysis (No Unit)
 (6) Negative = Undetectable / Positive = Detectable

Picture of Sample as Received:



AYGU19-00120.001

This document is issued by the Company subject to its General Conditions of Service printed overleaf, available on request or accessible at <http://www.sgs.com/en/Terms-and-Conditions.aspx> and, for electronic format documents, subject to Terms and Conditions for Electronic Documents at www.sgs.com/terms_e-document.htm http://www.sgs.com/terms_e-document.htm. Attention is drawn to the limitation of liability, indemnification and jurisdiction issues defined therein. Any holder of this document is advised that information contained herein reflects the Company's findings at the time of its intervention only and within the limits of Client's instructions, if any. The Company's sole responsibility is to its Client and this document does not exonerate parties to a transaction from exercising all their rights and obligations under the transaction documents. This document cannot be reproduced except in full, without prior written approval of the Company. Any unauthorized alteration, forgery or falsification of the content or appearance of this document is unlawful and offenders may be prosecuted to the fullest extent of the law. Unless otherwise stated the results shown in this test report refer only to the sample(s).



Testing Flow Chart for RoHS:Cd/Pb/Hg/Cr⁶⁺ /PBBs&PBDEs Testing



The samples were dissolved totally by pre-conditioning method according to above flow chart for Cd,Pb,Hg.

Section Chief : Sharpless Park

*** End of Report ***

This document is issued by the Company subject to its General Conditions of Service printed overleaf, available on request or accessible at <http://www.sgs.com/en/Terms-and-Conditions.aspx> and, for electronic format documents, subject to Terms and Conditions for Electronic Documents at www.sgs.com/terms_e-document.htm http://www.sgs.com/terms_e-document.htm. Attention is drawn to the limitation of liability, indemnification and jurisdiction issues defined therein. Any holder of this document is advised that information contained herein reflects the Company's findings at the time of its intervention only and within the limits of Client's instructions, if any. The Company's sole responsibility is to its Client and this document does not exonerate parties to a transaction from exercising all their rights and obligations under the transaction documents. This document cannot be reproduced except in full, without prior written approval of the Company. Any unauthorized alteration, forgery or falsification of the content or appearance of this document is unlawful and offenders may be prosecuted to the fullest extent of the law. Unless otherwise stated the results shown in this test report refer only to the sample(s).